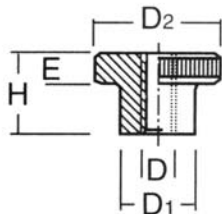




### DIN 466 TUERCA MOLETEADA

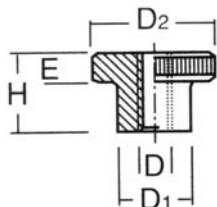
MATERIAL	
F114	5320
A-2	5330



Ref.	D	D1	D2	E	H
001	M-4	8	16	3,5	9,5
002	M-5	10	20	4	11,5
003	M-6	12	24	5	15
004	M-8	16	30	6	18
005	M-10	20	36	8	23
006	M-12	22	40	10	25

### DIN 467 TUERCA MOLETEADA

MATERIAL	
F114	5340
A-2	5350



Ref.	D	D1	D2	E	H
001	M-6	12	24	6	5
002	M-8	16	30	8	6
003	M-10	20	36	10	8
004	M-12	22	40	12	10

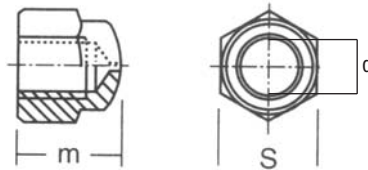
### DIN 315 TUERCA MARIPOSA

MATERIAL	
6 ZN	5360
A-2	5370
A-4	5380
NYLON	5390
LATÓN	5400



Ref.	d	Paso	a mm	L mm	m mm
001	M-3	0,50	9,5	11,5	4
002	M-4	0,70	9,5	11,5	4
003	M-5	0,80	9,5	11,5	4
004	M-6	1	11,9	13,2	4,3
005	M-8	1,25	13,5	16	5,4
006	M-10	1,50	15,3	18,2	6,3
007	M-12	1,75	20,5	23,8	7,9
008	M-14	2	25	32,5	10,6
009	M-16	2	25	32,5	10,6
010	M-18	2,50	29,3	32,9	12,2
011	M-20	2,50	29,3	32,9	12,2

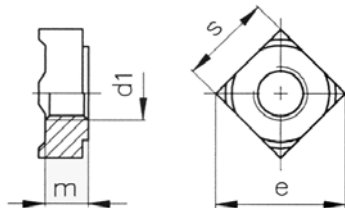
### DIN 1587 TUERCA CIEGA



MATERIAL	
6 ZN	5410
A-2	5420
A-4	5430
NYLON	5440
LATÓN	5450

Ref.	d	Paso	s mm	m mm
001	M-3	0,50	5,5	6
002	M-4	0,70	7	8
003	M-5	0,80	8	10
004	M-6	1	10	12
005	M-8	1,25	13	15
006	M-10	1,50	17	18
007	M-12	1,75	19	22
008	M-14	2	22	25
009	M-16	2	24	28
010	M-18	2,50	27	32
011	M-20	2,50	30	34

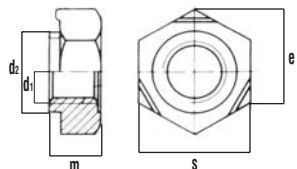
### DIN 928 TUERCA SOLDABLE CUADRADA



MATERIAL	
6	5460
A-2	5470
A-4	5480

Ref.	d1	s	e	m
001	M-5	8	11	4,2
002	M-6	10	13	5
003	M-8	14	18	6,5

### DIN 929 TUERCA SOLDABLE HEXAGONAL



MATERIAL	
6	5490
A-2	5500
A-4	5510

Ref.	d1	s	e	m	d2
001	M-3	7,5	8,15	3	4,5
002	M-4	9	9,83	3,5	6
003	M-5	10	10,95	4	7
004	M-6	11	12,02	5	8
005	M-8	14	15,38	6,5	10,5
006	M-10	17	18,74	8	12,5
007	M-12	19	20,91	10	14,8
008	M-16	24	26,51	13	18,8